

New ABS Touchpad Kit

A new ABS touchpad is available, featuring greater durability. Coca-Cola Parts provides a kit with everything you need.



Kit ([CCP# 28065](#)) Components

- Qty: 1 - ABS Touchpad
- Qty: 1 - ABS Decal Sheet ([CCP# 144265](#))
- Qty: 1 - Mini Razor Blade Scraper ([CCP# 144369](#))
- Qty: 1 - Step by Step Installation Instructions ([CCP# 144486](#))
- Qty: 1 - Adhesive remover pads/heavy duty cleaning wipes ([CCP# 144370](#))
- Qty: 2 - Alcohol wipes ([CCP# 126213](#))

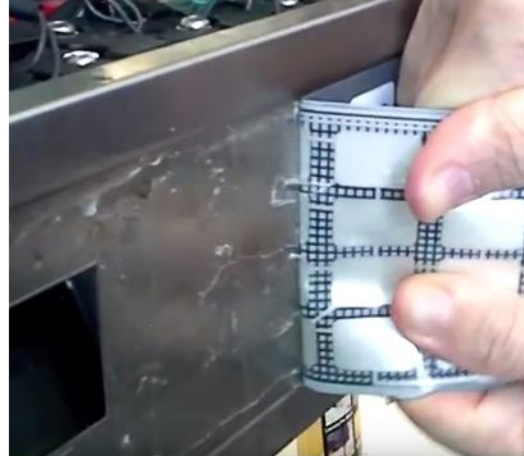
Features

- Capacitive Technology
- Robust Wiring Harness
(replaceable as a separate part if needed, [CCP# 143863](#))
- Powered by 12VDC
- Bezel color subject to change



Step 1: Remove the Defective Touchpad and Adhesive.

Use the included scraper, adhesive remover pads and alcohol wipes to remove all remaining residue.

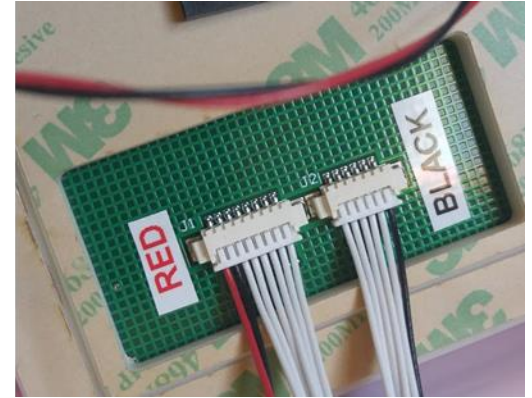
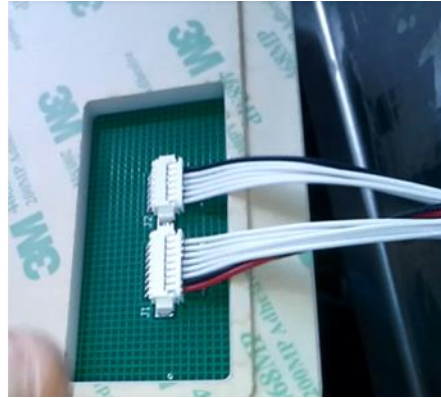


Step 2: Without peeling the adhesive paper, align the touchpad to the shroud.

Once seated, mark a line on the top and on each side.



Step 3: Route the harness through the shroud slot and plug into the back of the touchpad. *IMPORTANT: Do not force, the plug attaches rather easily.*



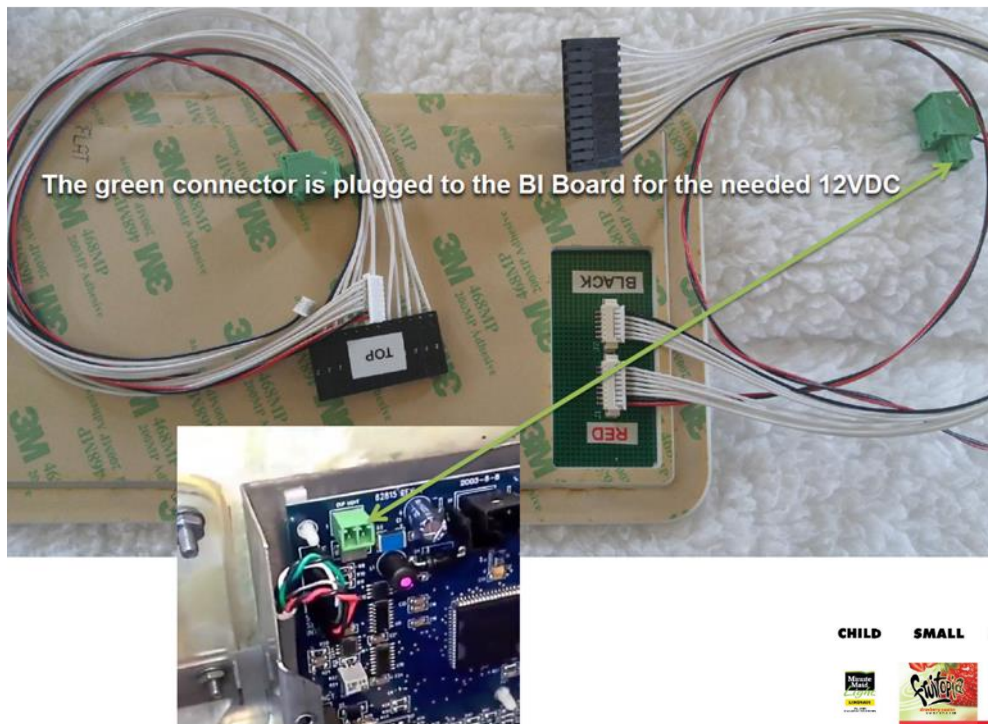
Step 4: Peel the adhesive and precisely apply the touchpad.

Ensure that the marks are lined up. *IMPORTANT: Once the adhesive touches the stainless steel, it will stick. Try to apply on first attempt. Once applied, press firmly to confirm the adhesive makes contact with the stainless steel.*



Step 5: Attach the harnesses to the beverage interface board.

Tuck the excess wires away.



Step 6 - Apply the appropriate decals (included in kit).

